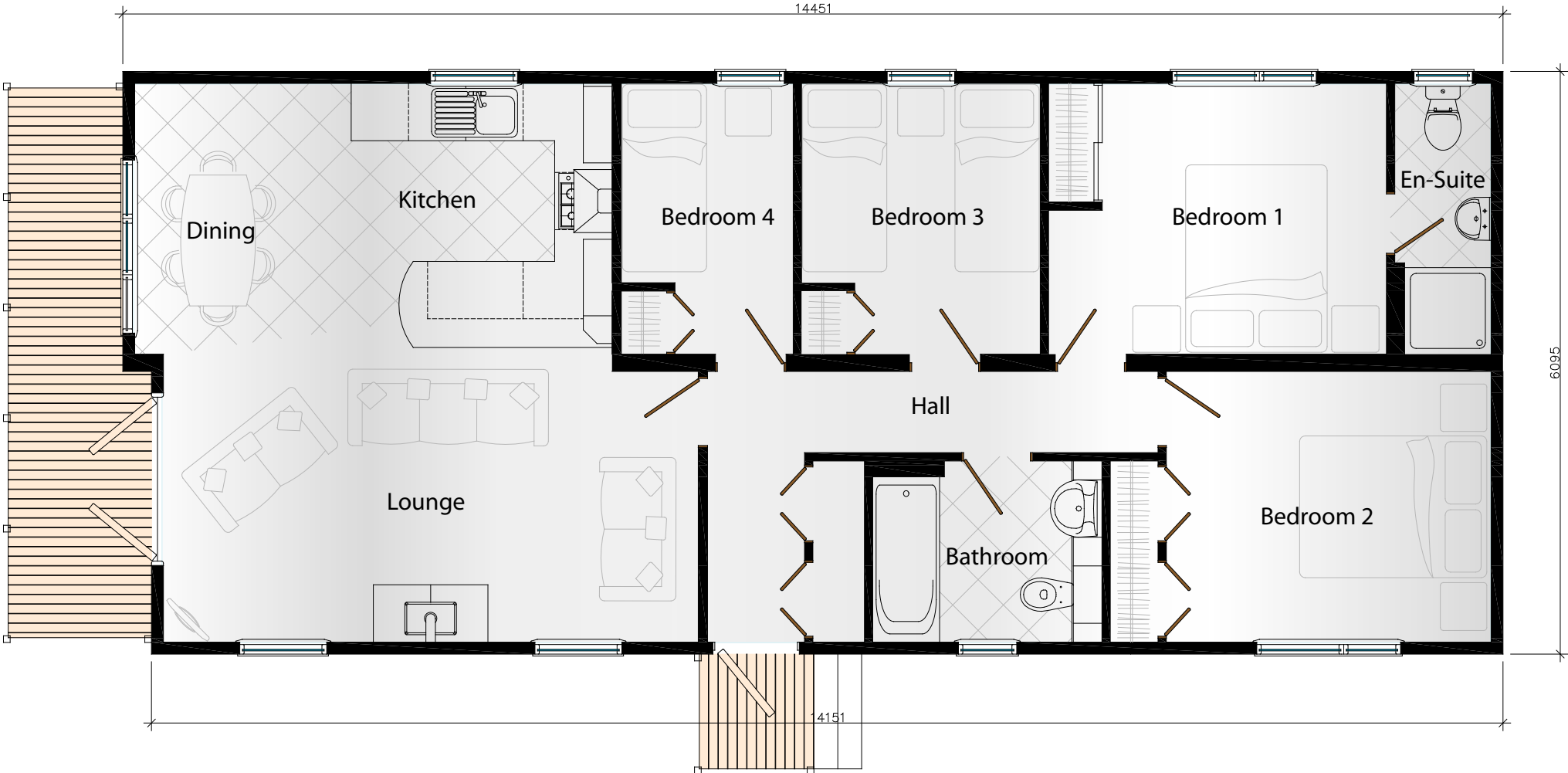


The Glenluce

4 bedroom, 8/10 person



Lounge -	5.60m x 2.83m	(18'4" x 9'3")
Kitchen/Dining -	4.99m x 3.01m	(16'4" x 9'9")
Bedroom 1 -	3.54m x 2.83m	(11'6" x 9'3")
Bedroom 2 -	3.40m x 2.83m	(11'2" x 9'3")
Bedroom 3 -	2.50m x 2.83m	(8'2" x 9'3")
Bedroom 4 -	1.80m x 2.83m	(5'9" x 9'3")
Bathroom -	2.40m x 1.89m	(7'9" x 6'2")
En-Suite -	1.08m x 2.83m	(3'5" x 9'3")

Total Area - 82.10sqm 269.37 sq ft